



Schenectady County  
Purchasing Department  
**ADDENDUM**

620 State St.-2nd Floor  
Schenectady, NY 12305  
[Purchasing@schenectadycounty.com](mailto:Purchasing@schenectadycounty.com)  
518.388.4240

---

**RFB-2023-23**

Schenectady County Jail Epoxy Flooring and Facilities Upgrade

**ADDENDUM #1**

7/24/2023

The purpose of this addendum is to provide detailed information to all Bidders. This addendum is hereby included in and made part of the Contract Documents, whether or not attached thereto. Receipt of this Addendum must be acknowledged on the bid form.

The following documents is hereby included in the documents posted on Bidnet and provided to plan holders:

- 1. This addendum changes the documents for Bid #RFB-2023-23. Revisions to Contract Drawings G100, A100, A100A, A101A, A102, A102A, A104A, A600**
- 2. The bid due date is August 3, 2023 at 2:00pm**
- 3. Attached sign in sheet from the July 13, 2023 Pre-Bid Walkthrough**

**Please acknowledge this addendum on your bid form.**

**END OF ADDENDUM #1**

# BID ADDENDUM #1

July 21, 2023

## Bid # RFB-2023-23

### SCHENECTADY COUNTY JAIL EPOXY FLOORING & FACILITIES UPGRADES

320 VEEDER AVE, SCHENECTADY, NY 12305

#### C2 DESIGN PROJECT #2266

---

This **Addendum #1** forms part of the Contract Documents and modifies the original bidding documents as dated June 21, 2023.

#### General Information

1. This addendum changes the documents for Bid #RFB-2023-23.
2. The bid due date is August 3, 2023 at 2:00pm
3. Attached sign in sheet from the July 13<sup>th</sup> 2023 Pre-Bid Walkthrough

#### Revisions to Contract Drawings G100, A100, A100A, A101A, A102, A102A, A104A, A600

Note: Below is listed a summary of revisions to the Contract Documents and may or may not include all scope revisions included in Addendum #1. It is the Contractor's responsibility to review all documents in full as submitted in this Addendum for all revisions and detailed information associated to the Addendum.

Drawing G100/Cover Sheet:

- Alternates
  - Revise Note to read: See specification section 01 23 00 for detailed descriptions of alternates. Drawings include additional scope information and Alternate scope location.

Drawing A100/Basement New Work plan-(Base Bid) (Phase 2)

- Detail 1, Partial Basement Plan:
  - Add note for photo booth equipment.

Drawing A100A/Basement Existing conditions Photos-(Base Bid) (Phase 2)

- Detail 8, Partial Basement Plan:
  - Change note: See Detail 7/600 for additional information

Drawings A101A/Details 5,6, & 10:

- Scale:
  - Change as noted to N.T.S.

Drawing A102/Second floor New Work Plan – 702 (Add Alt. 2&3) (Phase 3)

- Key Notes:
  - Add key note as shown.

Drawings A102A/Details 1, 3:

- Detail 1 Title:
  - Delete Serum (viewing)
- Detail 3 Scale:
  - Change as noted to N.T.S.

Drawings A104A/Detail 4:

- Scale:
  - Change as noted to N.T.S

Drawings A600/Details 3, 4, 5 & 8:

- Note revisions:
  - Change as noted

## Revisions to Specifications

- Section 00 02 00 Notice to Bidders:

- Revise tile to read:

Notice to Bidders

RFB-2023-23

Jail Epoxy Flooring and Facility Upgrades

## General Bid RFI's

None:

*Apart from the items outlined in this addendum, all other provisions of the original scope shall remain in effect.*

**END OF ADDENDUM #01**

COUNTY JAIL EXIST'G FLOORING & FACILITY UPGRADES  
 CONTRACTOR WALKTHROUGH SIGN-IN

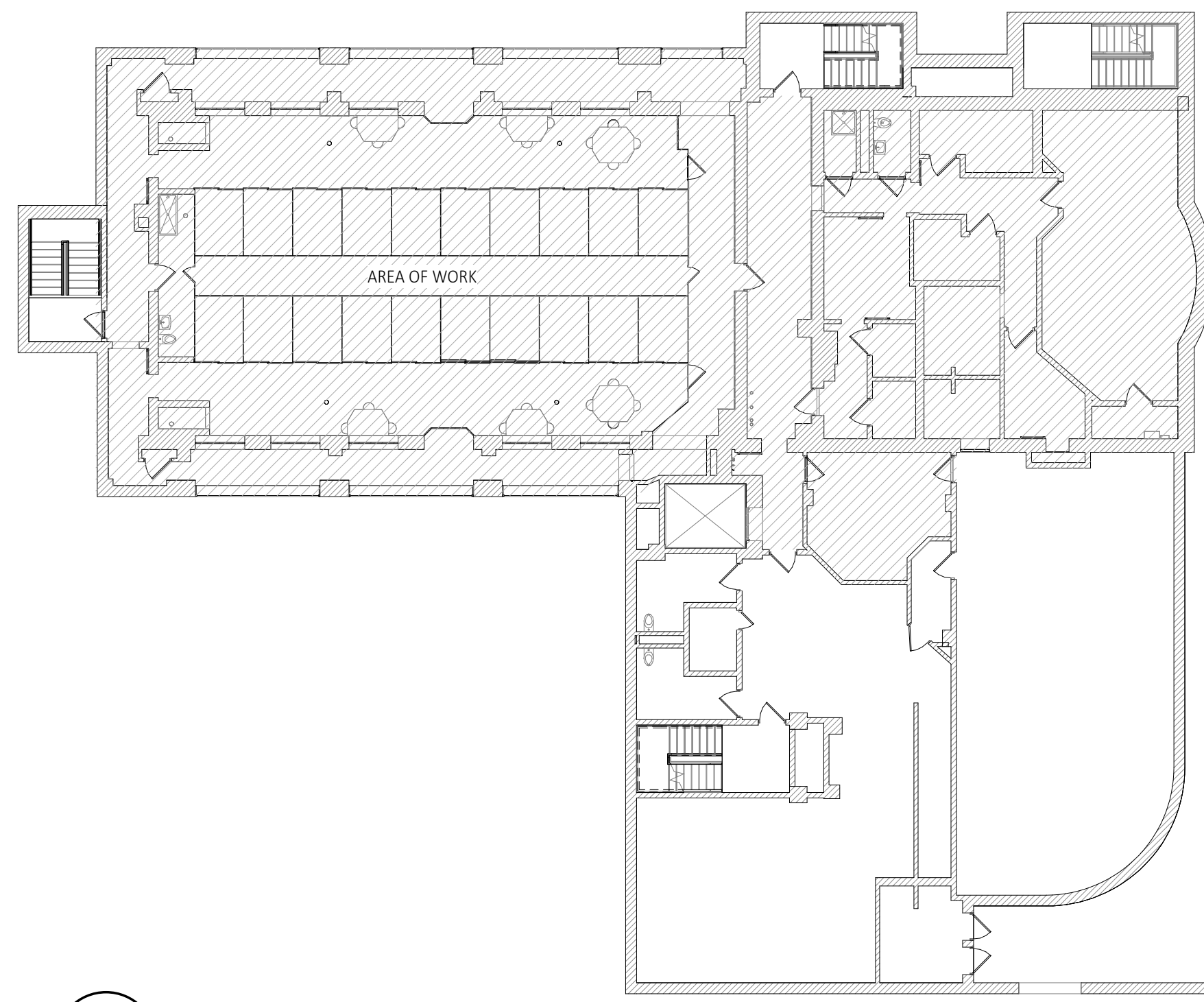
RFB 2023-23  
 7/13/2023

NAME (COMPANY NAME)	PHONE #	E-MAIL
Pete Best - Hall Iron Smock	914-403-6891	p.besthall@ironsmoke.com
Jonathan Krueger Rohan Lewis Krueger Electric	518-832-8326	Jonathan@ KruegerElectric.com
Sean Eastman M/E Engineering	518-533-2171	SEAN@MEENGINEERING.COM



PROJECT NAME: RFB 2023-23	
DRAWING TITLE:	
DATE: 7/13/2023	SCALE:
DRAWN BY:	SHEET NO. OF





**2** Area of Work Key Plan  
A101 SCALE: 1/16" = 1'-0"

Category	Finish No.	Manufacturer	Series   Style   Color	Size	Comments
PAINT	PT-1	SHERWIN WILLIAMS	CATALYZED RESIN 873-300   COLOR BY OWNER		UNIVERSAL PRIMER 866-1310
PAINT	PT-2	SHERWIN WILLIAMS	CATALYZED RESIN 873-300   SW7069-ORE		UNIVERSAL PRIMER 866-1310
RESINOUS	RS-1	SHERWIN WILLIAMS	RESUFLOOR 3746   ELLADUR 4850   SW 7668 MARCH WIND		PROVIDE SHARKGRIP SLIP RESISTANCE
RUBBER BASE	RB-1	MANNINGTON COMMERCIAL	BURKBASE TYPE TPJ ESPRESSO 109	6"	ADHESIVE MR-101
SHEET VINYL	SV-1	MANNINGTON COMMERCIAL	BIOSPEC MD   MCS-42 SEAM SEALER   COLOR BY OWNER		ADHESIVE V-88
SOLID SURFACE	SS-1	ARISTECH SURFACES	DOVE GREY 8231		SEE ALTERNATES 1, 3, 5, 7, AND 10 TO MATCH EXISTING PANELS DIMENSIONS.

**General Notes**

- THE DRAWINGS ARE MEANT TO BE REPRESENTATIVE OF THE SCOPE OF WORK BUT SHOULD NOT BE CONSIDERED ALL-INCLUSIVE. THE CONTRACTOR NEEDS TO VERIFY ALL FIELD CONDITIONS AND NOTIFY THE ARCHITECT REGARDING ANY DISCREPANCIES.
- RESINOUS FLOOR FINISH SHALL BE INSTALLED PER SPECIFICATIONS AND APPROVED MANUFACTURER'S RECOMMENDATIONS.
- CONTRACTOR SHALL LEAVE WORK AREA IN CLEAN, ORDERLY CONDITION AT JOB COMPLETION.
- CONTRACTOR SHALL PROVIDE A LIST OF TOOLS AND MATERIALS TO THE DESIGNATED JAIL OFFICER THAT WILL NEED TO BE BROUGHT INTO THE FACILITY. COORDINATE WITH OWNER.
- TOOLS ARE NOT TO BE LEFT INSIDE THE FACILITY OVERNIGHT. ANY TOOLS THAT COME IN THE FACILITY MUST LEAVE WITH THE AWARDED CONTRACTOR, AT THE END OF EACH DAY. UNLESS OTHERWISE AGREED TO BY JAIL AUTHORITY.
- REFER TO ELECTRICAL DRAWINGS FOR ADDITIONAL SCOPE OF WORK.

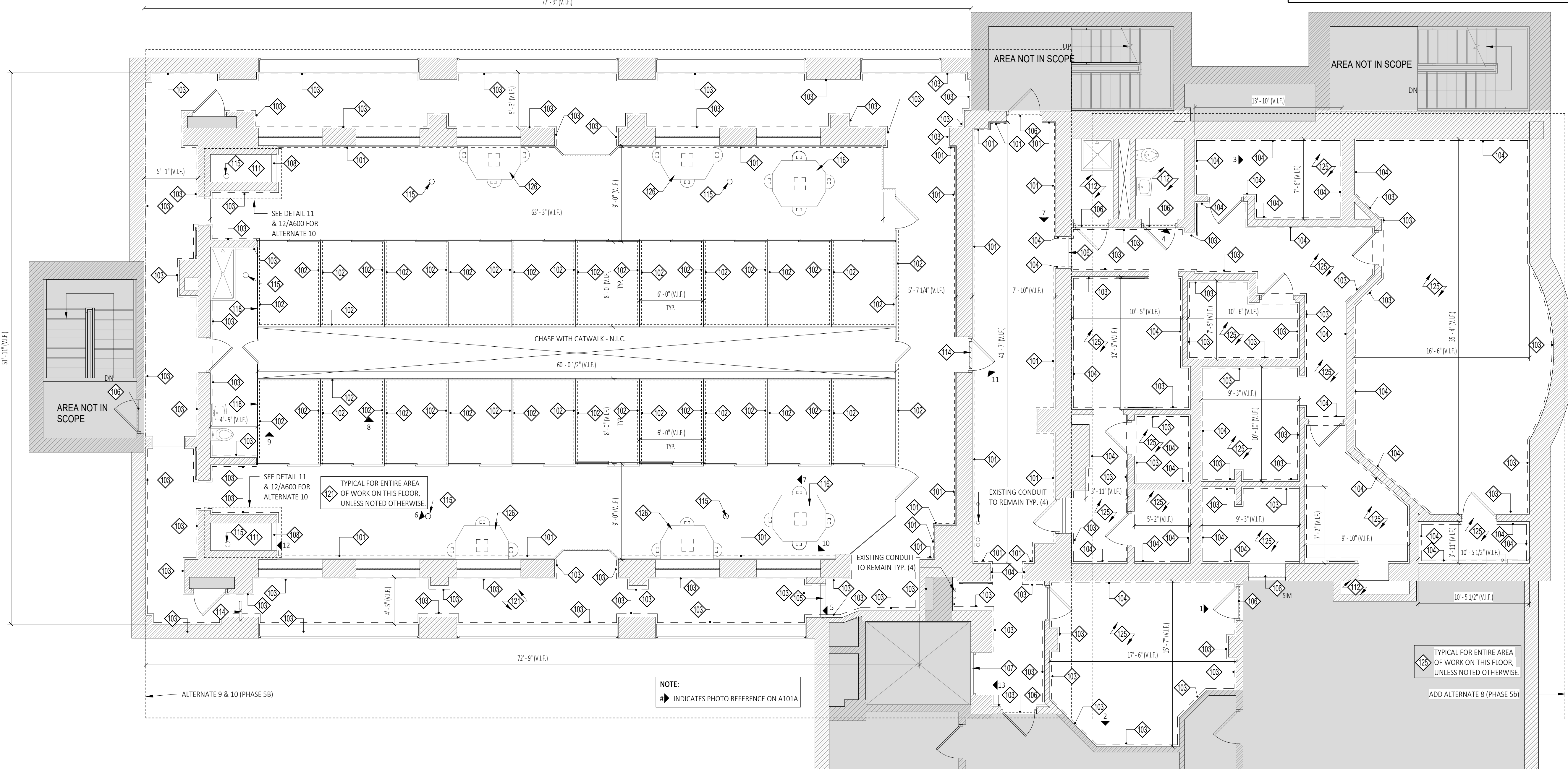
**NEW WORK SURFACE PREPARATION (ALL AREAS OF WORK)**  
(1/8" - 1/4" GAP, 2" OR LONGER IN LENGTH OR FULL WIDTH OF OPENING)

- REMOVE, REPAIR AND PATCH ALL AREAS OF DAMAGED OR NON DURABLE CONCRETE IN SCOPE OF WORK FOR ALL PHASES.
- REPAIR AND PATCH ALL AREAS OF SURFACE IRREGULARITIES SUCH AS, BUT NOT LIMITED TO; CRACKS, HOLES, AND JOINTS DAMAGE PRIOR TO PREPPING SURFACE FOR NEW FINISH.
- REMOVE ALL CONTAMINANTS ON ALL CONCRETE SURFACES WITHIN SCOPE OF WORK AREAS, INCLUDING BUT NOT LIMITED TO; PAINT, OIL, WAX, DEBRIS, ETC. PRIOR TO PREPPING THE SURFACE FOR NEW FINISH.
- PROVIDE REQUIRED SURFACE PROFILE AS RECOMMENDED BY NEW FLOORING MANUFACTURER WORK NOT LIMITED TO; GRINDING, BLAST CLEANING, AND SCARIFYING, ETC.
- GRIND ALL EXISTING TERRAZZO SURFACES AND PREP FOR NEW WORK.
- CONTRACTOR SHALL BE RESPONSIBLE TO LOCATE AND IDENTIFY ALL CONSTRUCTION JOINTS AND CRACK ISOLATION JOINTS. ALL CONTROL JOINTS AND EXPANSION JOINTS ARE TO BE HONORED AND MAINTAINED.
- PREPARE ALL EXISTING FLOOR TYPES FLUSH WITH OTHER ADJACENT FLOORS IN SCOPE AREA AND /OR ROOM. PREP AS REQUIRED FOR NEW FLOOR FINISH.

**CONCRETE / CONTROL JOINTS AND CRACKS TREATMENT:**  
(1/8" - 1/4" GAP, 2" OR LONGER IN LENGTH OR FULL WIDTH OF OPENING)

- SAW CUT JOINT AND CLEAN ALL DEBRIS OUT OF JOINT.
- PRIME SURFACES OF JOINT WITH EPOXY PRIMER.
- PROVIDE EPOXY MORTAR IN JOINT, GRIND SMOOTH LEVEL TO EXISTING FLOOR SLAB SURFACE.
- AFTER DRY PERIOD, PRIME AND COAT WITH NEW RESINOUS FLOORING.
- PROVIDE SELF PRIMING EPOXY MORTAR TO FILL IN HOLES AND DAMAGED CONCRETE, GRIND SMOOTH.

Floor Plan Keynote Legend	
101	RESINOUS FLOORING AT EXISTING BASE, REFERENCE 1/A600 FOR BASE DETAIL. EXTENT SHOWN BY DASHED LINE ON PLAN.
102	RESINOUS FLOORING AT EXISTING CURB, REFERENCE 2/A600 FOR BASE DETAIL. EXTENT SHOWN BY DASHED LINE ON PLAN.
103	RESINOUS FLOORING AT EXISTING CMU WALL, REFERENCE 3/A600 FOR BASE DETAIL. EXTENT SHOWN BY DASHED LINE ON PLAN.
104	RESINOUS FLOORING AT EXISTING PLASTER/GWB WALL, REFERENCE 4/A600 FOR BASE DETAIL. EXTENT SHOWN BY DASHED LINE ON PLAN.
105	NEW METAL TRANSITION TO EXISTING EXP. PLATE REFERENCE 5/A600 (PAINTED PLATE AND TRANSITION PT-1).
106	REFERENCE 6/A600 FOR THRESHOLD DETAIL AT DOOR.
107	METAL TRANSITION AT ELEVATOR DOOR SILL, REFERENCE 7/A600 FOR BASE DETAIL AT ELEVATOR.
108	REFERENCE 8/A600 FOR CURB DETAIL AT SHOWER.
109	RUBBER BASE AT EXISTING CMU, REFERENCE 9/A600 FOR BASE DETAIL. EXTENT SHOWN BY DASHED LINE ON PLAN (RB-1).
110	METAL CURB DETAIL AT PRISON CELL PERIMETER CORRIDOR, REFERENCE 10/A600 FOR DETAIL. EXTENT SHOWN BY DASHED LINE ON PLAN.
111	PROVIDE NEW RESINOUS FLOORING OVER EXISTING CONCRETE AND CURB IN SHOWERS (TYP.).
112	EXISTING CERAMIC TILE FLOOR AND BASE TO REMAIN CLEAN ALL FLOOR, BASE, AND FIXTURES.
113	EXISTING ELECTRICAL PANELS. SEE ELECTRICAL DRAWINGS FOR ADDITIONAL INFORMATION.
114	REPAIR EXISTING FLOOR CRACKS IN SLAB AS REQUIRED, LEVEL FLUSH WITH EXISTING SURFACE.
115	REMOVE AND CLEAN FLOOR COVER, PROVIDE SECURITY S.S. SCREWS AS REQUIRED. REINSTALL FLUSH WITH NEW FLOOR FINISH
116	EXISTING FLOOR MOUNTED FURNITURE TO BE REMOVED, STORED AND REINSTALLED BY G.C..
117	EXISTING CONCRETE FLOOR PATCH (V.I.F.), GRIND FLUSH WITH ADJACENT FLOOR IN SCOPE AREA OR ROOM. PREP FOR NEW FLOOR FINISH.
118	NO CURB AT METAL PANEL.
119	EXISTING EQUIPMENT TO REMAIN. PROTECT AND CLEAN AS REQUIRED FOR NEW WORK.
121	NEW RESINOUS FLOOR FINISH (EP-1), BASEMENT AND 1ST FLOOR (1B).
122	NEW RESINOUS FLOOR FINISH (EP-2), 2ND FLOOR.
123	NEW RESINOUS FLOOR FINISH (EP-3), 3RD FLOOR.
124	NEW RESINOUS FLOOR FINISH (EP-4), 4TH FLOOR (4A AND 4B).
125	NEW SHEET VINYL FLOORING (SV-1), BASEMENT, 1ST (OFFICE) AND 2ND (OFFICE) FLOORS.
126	EXISTING FLOOR AND WALL MOUNTED FURNITURE TO REMAIN IN PLACE.
127	6" WIDE ANTI-SLIP TAPE, SEE GENERAL NOTES FOR ADDITIONAL INFORMATION ON APPLICATION.
128	REFERENCE 5/A104 FOR ADDITIONAL INFORMATION.
129	REMOVE, CLEAN, AND REINSTALL BASE FOR RESINOUS FLOOR WORK.
130	CHASE DOOR TO BE PAINTED (PT-2), SEE DETAIL 10/A104A AND FINISH SCHEDULE.



**1** First Floor New Work Plan - (701) Add Alternate 8, 9, & 10 - Phases 5a & 5b  
A101 SCALE: 3/16" = 1'-0"

**ARCHITECTURE, PC**  
 WWW.C2-DESIGNGROUP.COM  
 24 AIRPORT ROAD | SCHENECTADY, NY 12302 | 518.320.8250

Bid Set: RFB-2023-23  
 SUBMITTAL / REVISION

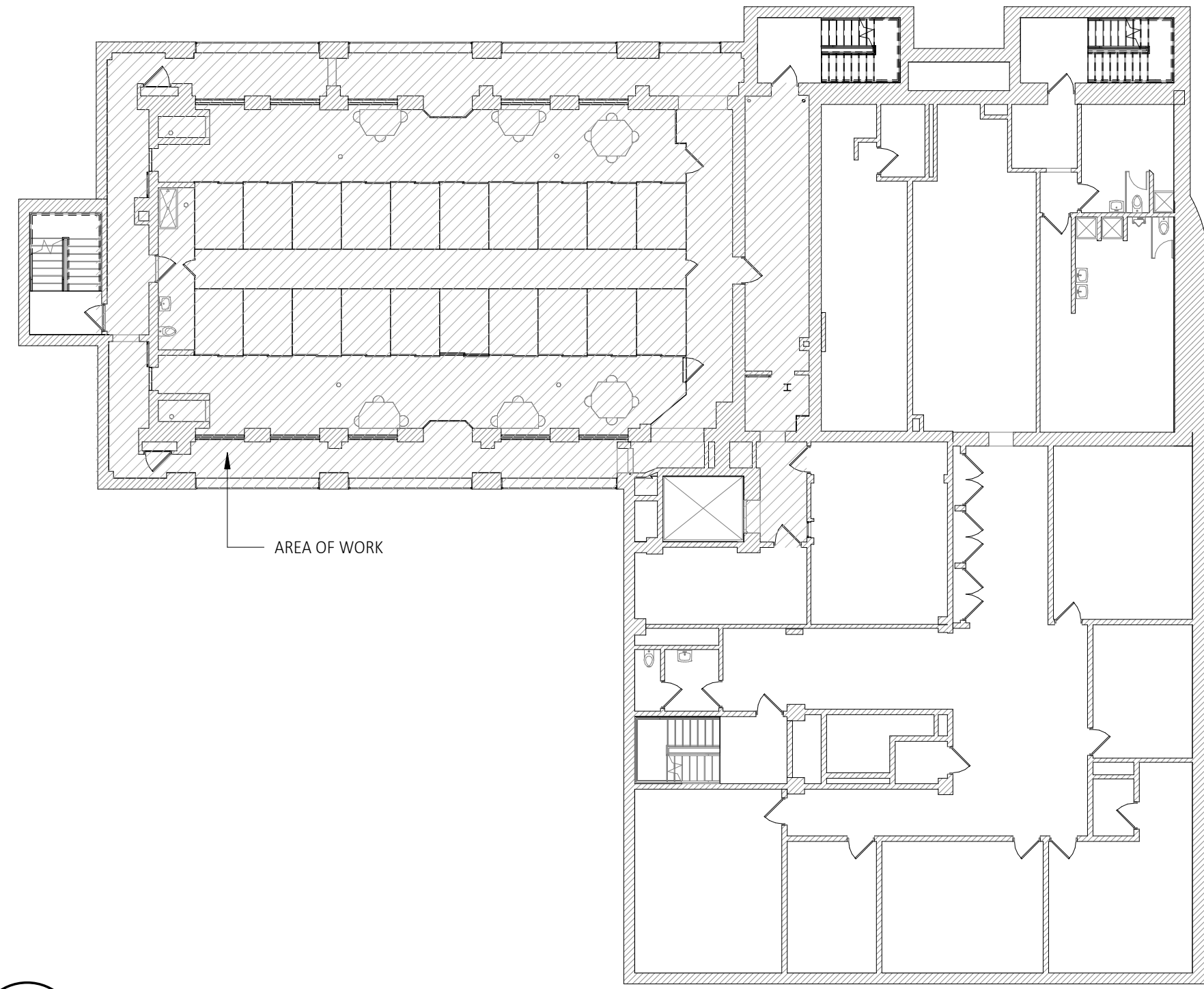
No. DATE:

PROJECT: **First Floor New Work Plan - 701 (Add Alt. 8, 9, & 10) (Phase 5a & 5b)**  
 Renovations To:  
 Schenectady County Jail Epoxy Flooring & Facilities Upgrades  
 Schenectady, NY 12305  
 320 Veeder Ave

DRAWN BY: C2 Architecture  
 DATE: 06/13/2023  
 SCALE: AS NOTED  
 JOB NO: 2286  
 SHEET: **A101**

PLOT DATE: 7/21/2023 3:14:46 PM





**2** Second Floor Area of Work Key Plan  
 A102 SCALE: 1/16" = 1'-0"

Category	Finish No.	Manufacturer	Series   Style   Color	Size	Comments
PAINT	PT-1	SHERWIN WILLIAMS	CATALYZED RESIN 873-300   COLOR BY OWNER		UNIVERSAL PRIMER B66-1310
PAINT	PT-2	SHERWIN WILLIAMS	CATALYZED RESIN 873-300   SW7069-ORE		UNIVERSAL PRIMER B66-1310
RESINOUS	RS-1	SHERWIN WILLIAMS	RESUFLOOR 3746   ELLADUR 4850   SW 7668 MARCH WIND		PROVIDE SHARKGRIP SLIP RESISTANCE
RUBBER BASE	RB-1	MANNINGTON COMMERCIAL	BURKBASE TYPE TP   ESPRESSO 109	6"	ADHESIVE MR-101
SHEET VINYL	SV-1	MANNINGTON COMMERCIAL	BIOSPEC MD   MCS-42 SEAM SEALER   COLOR BY OWNER		ADHESIVE V-88
SOLID SURFACE	SS-1	ARISTECH SURFACES	DOVE GREY 8231		SEE ALTERNATES 1, 3, 5, 7, AND 10 TO MATCH EXISTING PANELS DIMENSIONS.

**General Notes**

- THE DRAWINGS ARE MEANT TO BE REPRESENTATIVE OF THE SCOPE OF WORK BUT SHOULD NOT BE CONSIDERED ALL-INCLUSIVE. THE CONTRACTOR NEEDS TO VERIFY ALL FIELD CONDITIONS AND NOTIFY THE ARCHITECT REGARDING ANY DISCREPANCIES.
- RESINOUS FLOOR FINISH SHALL BE INSTALLED PER SPECIFICATIONS AND APPROVED MANUFACTURER'S RECOMMENDATIONS.
- CONTRACTOR SHALL LEAVE WORK AREA IN CLEAN, ORDERLY CONDITION AT JOB COMPLETION.
- CONTRACTOR SHALL PROVIDE A LIST OF TOOLS AND MATERIALS TO THE DESIGNATED JAIL OFFICER THAT WILL NEED TO BE BROUGHT INTO THE FACILITY. COORDINATE WITH OWNER.
- TOOLS ARE NOT TO BE LEFT INSIDE THE FACILITY OVERNIGHT. ANY TOOLS THAT COME IN THE FACILITY MUST LEAVE WITH THE AWARDED CONTRACTOR, AT THE END OF EACH DAY, UNLESS OTHERWISE AGREED TO BY JAIL AUTHORITY.
- REFER TO ELECTRICAL DRAWINGS FOR ADDITIONAL SCOPE OF WORK.

**NEW WORK SURFACE PREPARATION (ALL AREAS OF WORK)**

- REMOVE, REPAIR AND PATCH ALL AREAS OF DAMAGED OR NON DURABLE CONCRETE IN SCOPE OF WORK FOR ALL PHASES.
- REPAIR AND PATCH ALL AREAS OF SURFACE IRREGULARITIES SUCH AS, BUT NOT LIMITED TO; CRACKS, HOLES, AND JOINTS DAMAGE PRIOR TO PREPPING SURFACE FOR NEW FINISH.
- REMOVE ALL CONTAMINANTS ON ALL CONCRETE SURFACES WITHIN SCOPE OF WORK AREAS, INCLUDING BUT NOT LIMITED TO; PAINT, OIL, WAX, DEBRIS, ETC. PRIOR TO PREPPING THE SURFACE FOR NEW FINISH.
- PROVIDE REQUIRED SURFACE PROFILE AS RECOMMENDED BY NEW FLOORING MANUFACTURER WORK NOT LIMITED TO; GRINDING, BLAST CLEANING, AND SCARIFYING, ETC.
- GRIND ALL EXISTING TERRAZZO SURFACES AND PREP FOR NEW WORK.
- CONTRACTOR SHALL BE RESPONSIBLE TO LOCATE AND IDENTIFY ALL CONSTRUCTION JOINTS AND CRACK ISOLATION JOINTS. ALL CONTROL JOINTS AND EXPANSION JOINTS ARE TO BE HONORED AND MAINTAINED.
- PREPARE ALL EXISTING FLOOR TYPES FLUSH WITH OTHER ADJACENT FLOORS IN SCOPE AREA AND /OR ROOM. PREP AS REQUIRED FOR NEW FLOOR FINISH.

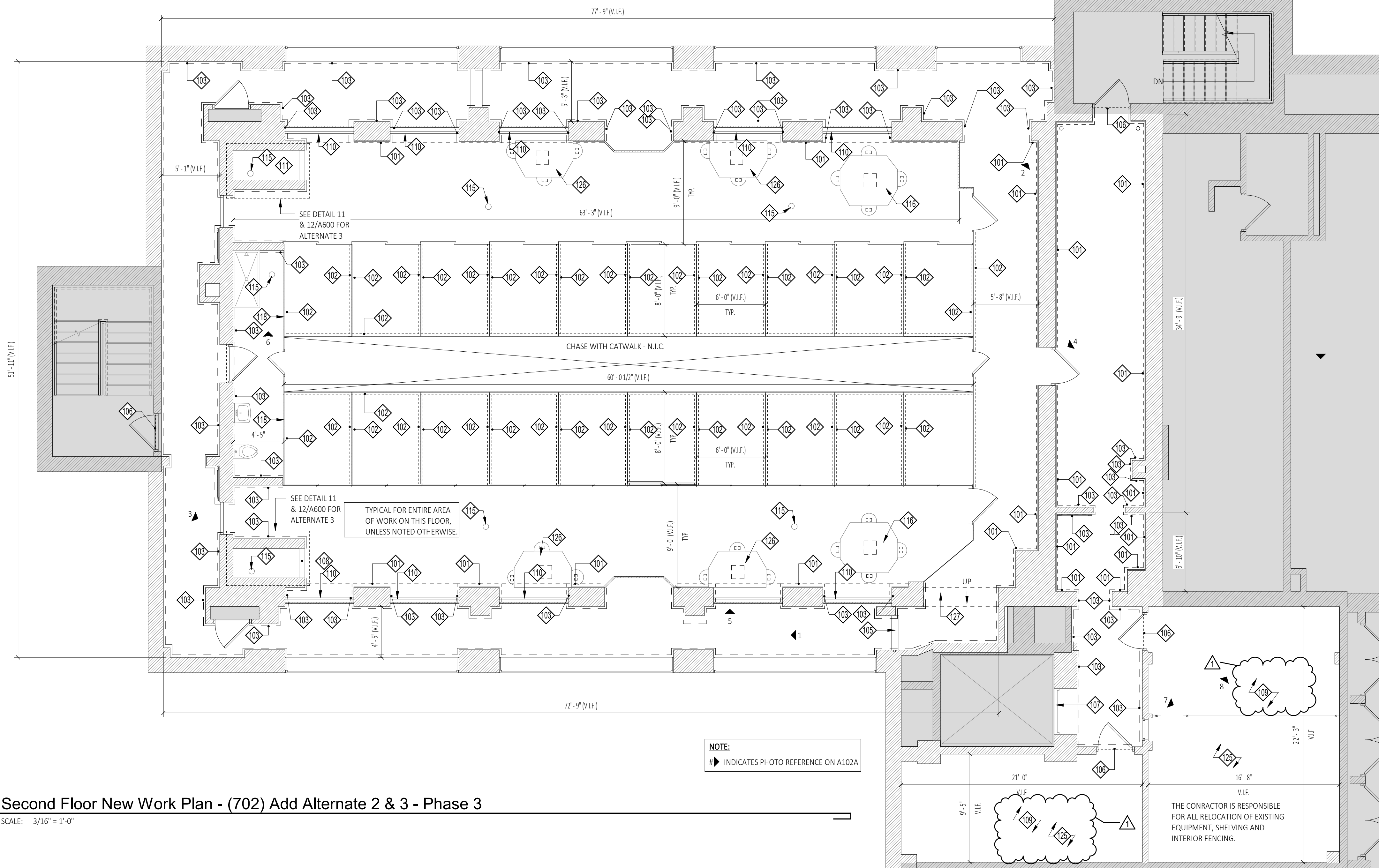
**CONCRETE / CONTROL JOINTS AND CRACKS TREATMENT:**

(1/8"-1/4" GAP, 2' OR LONGER IN LENGTH OR FULL WIDTH OF OPENING)

- SAW CUT JOINT AND CLEAN ALL DEBRIS OUT OF JOINT.
- PRIME SURFACES OF JOINT WITH EPOXY PRIMER.
- PROVIDE EPOXY MORTAR IN JOINT, GRIND SMOOTH LEVEL TO EXISTING FLOOR SLAB SURFACE.
- AFTER DRY PERIOD, PRIME AND COAT WITH NEW RESINOUS FLOORING.
- PROVIDE SELF PRIMING EPOXY MORTAR TO FILL IN HOLES AND DAMAGED CONCRETE, GRIND SMOOTH.

**Floor Plan Keynote Legend**

101	RESINOUS FLOORING AT EXISTING BASE, REFERENCE 1/A600 FOR BASE DETAIL. EXTENT SHOWN BY DASHED LINE ON PLAN.
102	RESINOUS FLOORING AT EXISTING CURB, REFERENCE 2/A600 FOR BASE DETAIL. EXTENT SHOWN BY DASHED LINE ON PLAN.
103	RESINOUS FLOORING AT EXISTING CMU WALL, REFERENCE 3/A600 FOR BASE DETAIL. EXTENT SHOWN BY DASHED LINE ON PLAN.
104	RESINOUS FLOORING AT EXISTING PLASTER/GWB WALL, REFERENCE 4/A600 FOR BASE DETAIL. EXTENT SHOWN BY DASHED LINE ON PLAN.
105	NEW METAL TRANSITION TO EXISTING EXP. PLATE REFERENCE 5/A600 (PAINTED PLATE AND TRANSITION PT-1).
106	REFERENCE 6/A600 FOR THRESHOLD DETAIL AT DOOR.
107	METAL TRANSITION AT ELEVATOR DOOR SILL, REFERENCE 7/A600 FOR BASE DETAIL AT ELEVATOR.
108	REFERENCE 8/A600 FOR CURB DETAIL AT SHOWER.
109	RUBBER BASE AT EXISTING CMU, REFERENCE 9/A600 FOR BASE DETAIL. EXTENT SHOWN BY DASHED LINE ON PLAN (RB-1).
110	METAL CURB DETAIL AT PRISON CELL PERIMETER CORRIDOR, REFERENCE 10/A600 FOR DETAIL. EXTENT SHOWN BY DASHED LINE ON PLAN.
111	PROVIDE NEW RESINOUS FLOORING OVER EXISTING CONCRETE AND CURB IN SHOWERS (TYP.).
112	EXISTING CERAMIC TILE FLOOR AND BASE TO REMAIN CLEAN ALL FLOOR, BASE, AND FIXTURES.
113	EXISTING ELECTRICAL PANELS, SEE ELECTRICAL DRAWINGS FOR ADDITIONAL INFORMATION.
114	REPAIR EXISTING FLOOR CRACKS IN SLAB AS REQUIRED, LEVEL FLUSH WITH EXISTING SURFACE.
115	REMOVE AND CLEAN FLOOR COVER, PROVIDE SECURITY S.S. SCREWS AS REQUIRED. REINSTALL FLUSH WITH NEW FLOOR FINISH
116	EXISTING FLOOR MOUNTED FURNITURE TO BE REMOVED, STORED AND REINSTALLED BY G.C..
117	EXISTING CONCRETE FLOOR PATCH (V.I.F.). GRIND FLUSH WITH ADJACENT FLOOR IN SCOPE AREA OR ROOM. PREP FOR NEW FLOOR FINISH.
118	NO CURB AT METAL PANEL.
119	EXISTING EQUIPMENT TO REMAIN. PROTECT AND CLEAN AS REQUIRED FOR NEW WORK.
121	NEW RESINOUS FLOOR FINISH (EP-1), BASEMENT AND 1ST FLOOR (1B).
122	NEW RESINOUS FLOOR FINISH (EP-2), 2ND FLOOR.
123	NEW RESINOUS FLOOR FINISH (EP-3), 3RD FLOOR.
124	NEW RESINOUS FLOOR FINISH (EP-4), 4TH FLOOR (4A AND 4B).
125	NEW SHEET VINYL FLOORING (SV-1), BASEMENT, 1ST (OFFICE) AND 2ND (OFFICE) FLOORS.
126	EXISTING FLOOR AND WALL MOUNTED FURNITURE TO REMAIN IN PLACE.
127	6" WIDE ANTI-SLIP TAPE, SEE GENERAL NOTES FOR ADDITIONAL INFORMATION ON APPLICATION.
128	REFERENCE 5/A104 FOR ADDITIONAL INFORMATION.
129	REMOVE, CLEAN, AND REINSTALL BASE FOR RESINOUS FLOOR WORK.
130	CHASE DOOR TO BE PAINTED (PT-2), SEE DETAIL 10/A104A AND FINISH SCHEDULE.



**1** Second Floor New Work Plan - (702) Add Alternate 2 & 3 - Phase 3  
 A102 SCALE: 3/16" = 1'-0"

**C2 ARCHITECTURE, PC**  
 WWW.C2-DESIGNGROUP.COM  
 24 AIRPORT ROAD | SCHENECTADY, NY 12302 | 518.320.8250

Bid Set: RFB-2023-23  
 SUBMITTAL / REVISION  
 Addendum #1

SHEET TITLE: Second Floor New Work Plan - 702 ( Add Alt. 2 & 3 ) ( Phase 3 )  
 DATE: 06/13/2023  
 SCALE: AS NOTED  
 JOB NO: 2286  
 SHEET: A102

Renovations To:  
 Schenectady County Jail Epoxy Flooring & Facilities Upgrades  
 Schenectady, NY 12305  
 320 Veeder Ave

DRAWN BY: C2 Architecture  
 DATE: 06/13/2023  
 SCALE: AS NOTED  
 JOB NO: 2286  
 SHEET: A102

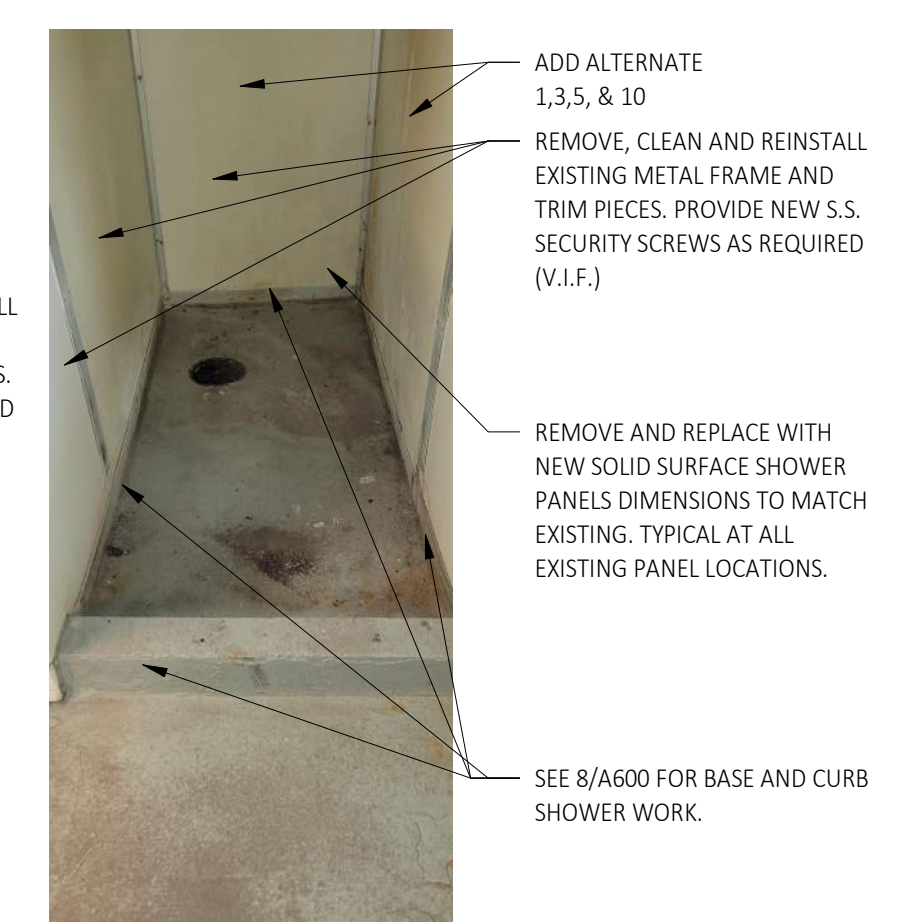
Copyright © 2022, C2 ARCHITECTURE, PC. The material and ideas contained in this document are confidential and are the proprietary property of C2 ARCHITECTURE, PC. These materials and ideas shall not be released or otherwise made available to any third party, or reproduced in whole or in part, without the express written consent of C2 ARCHITECTURE, PC.

PLOT DATE: 7/21/2023 3:14:47 PM

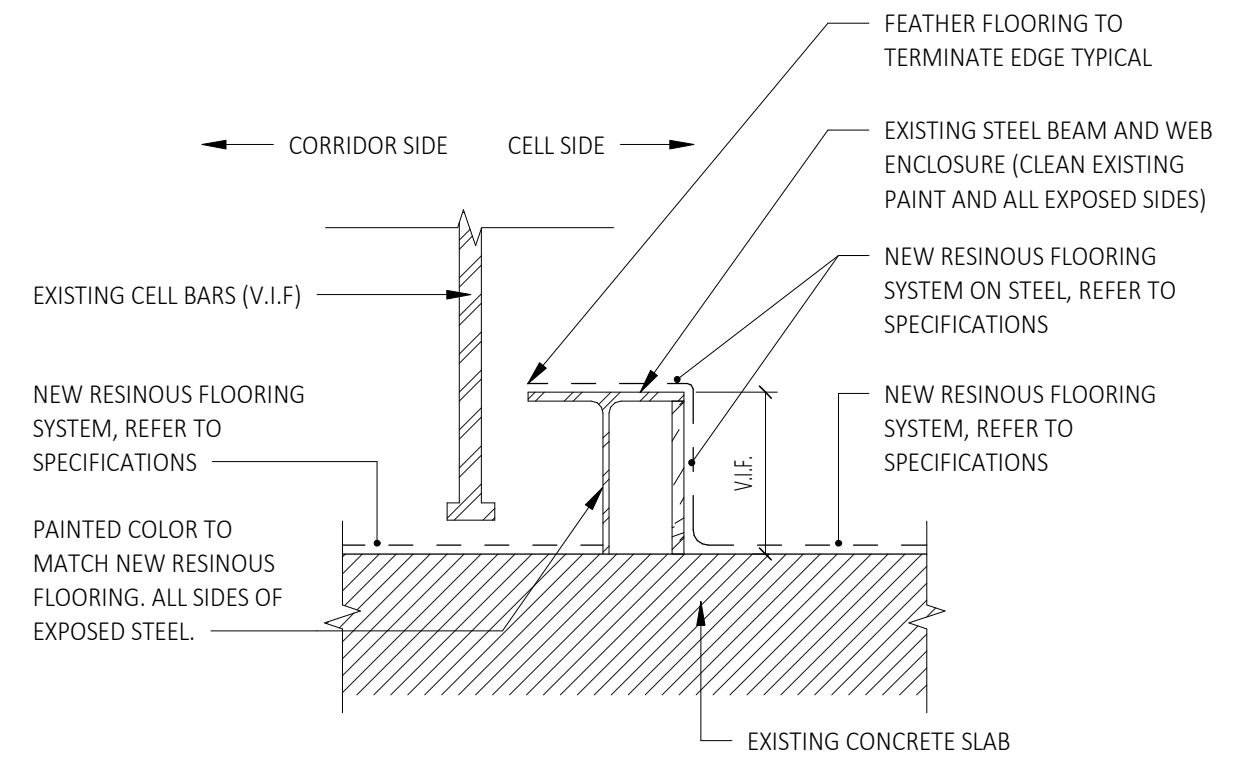




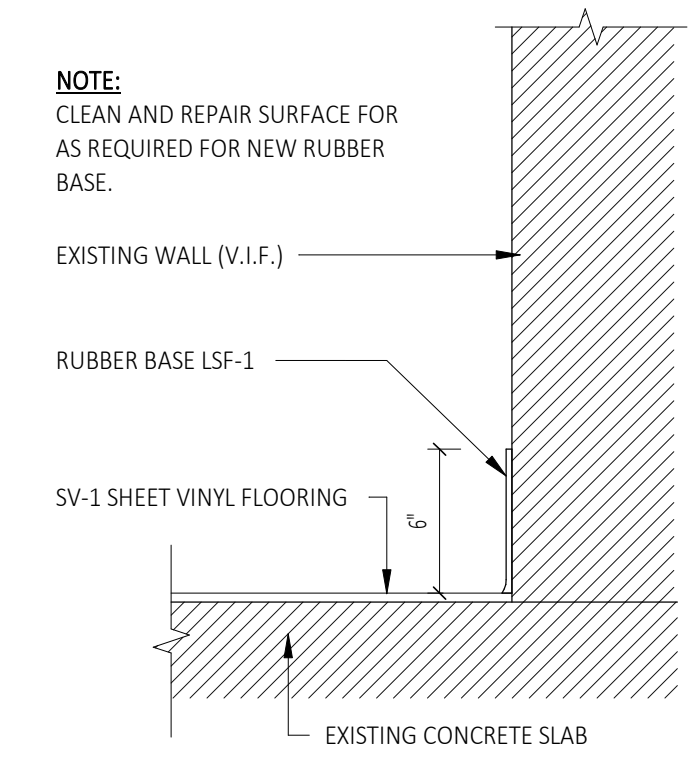
**12**  
**A600** Shower Enclosure Replacement  
 Alternate 1,3,5 & 10  
 SCALE: N.T.S.



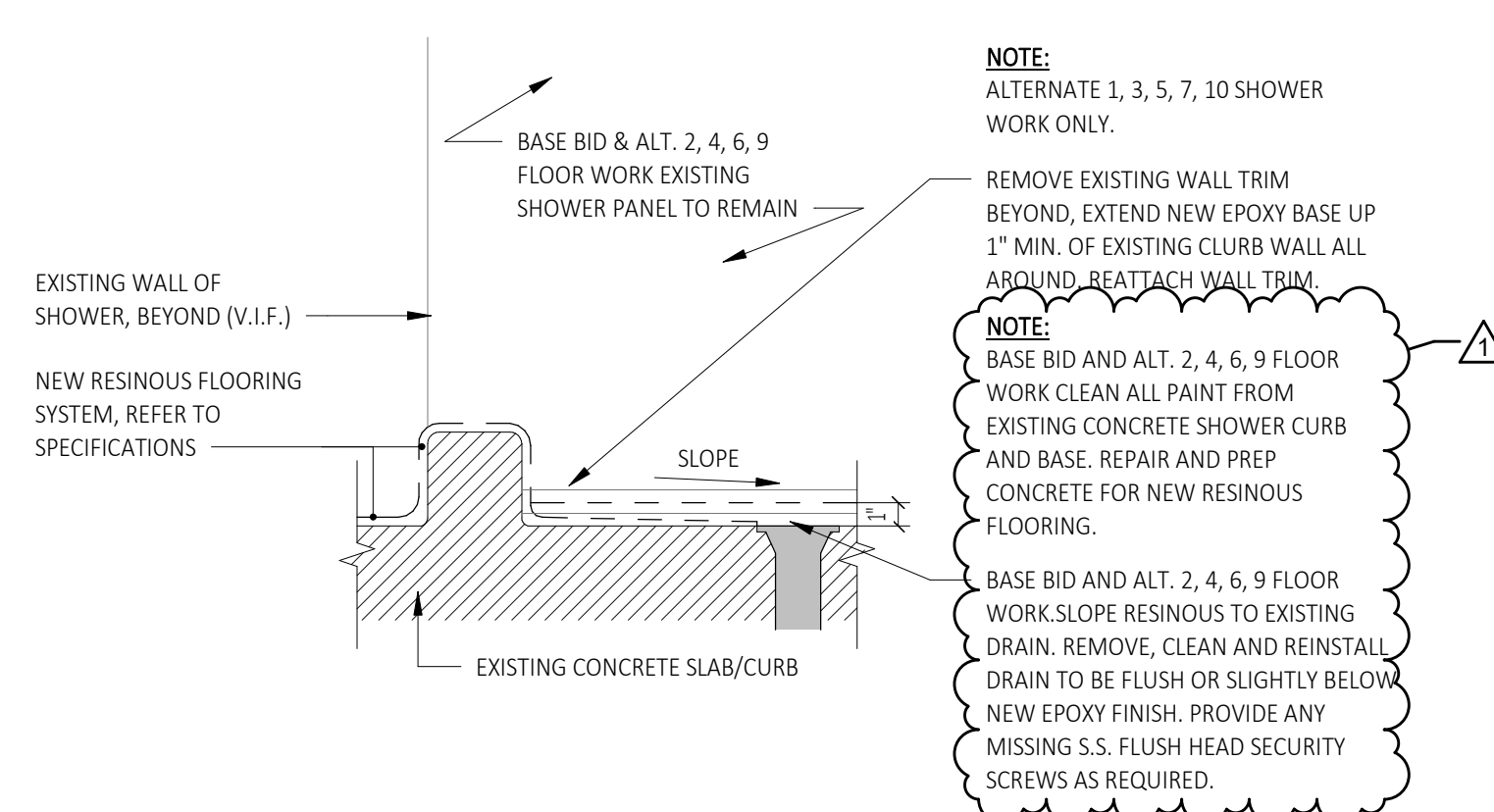
**11**  
**A600** Shower Details for Add Alternate  
 SCALE: N.T.S.



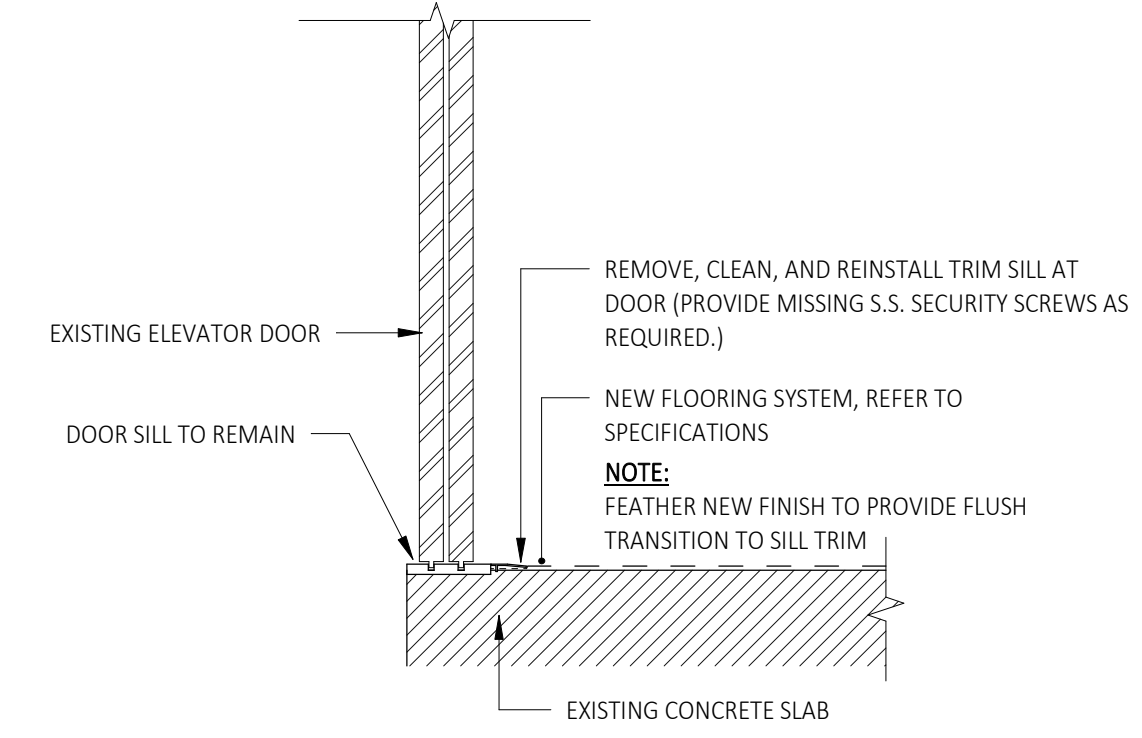
**10**  
**A600** At Floor Steel Beams In Cell  
 SCALE: 1 1/2" = 1'-0"



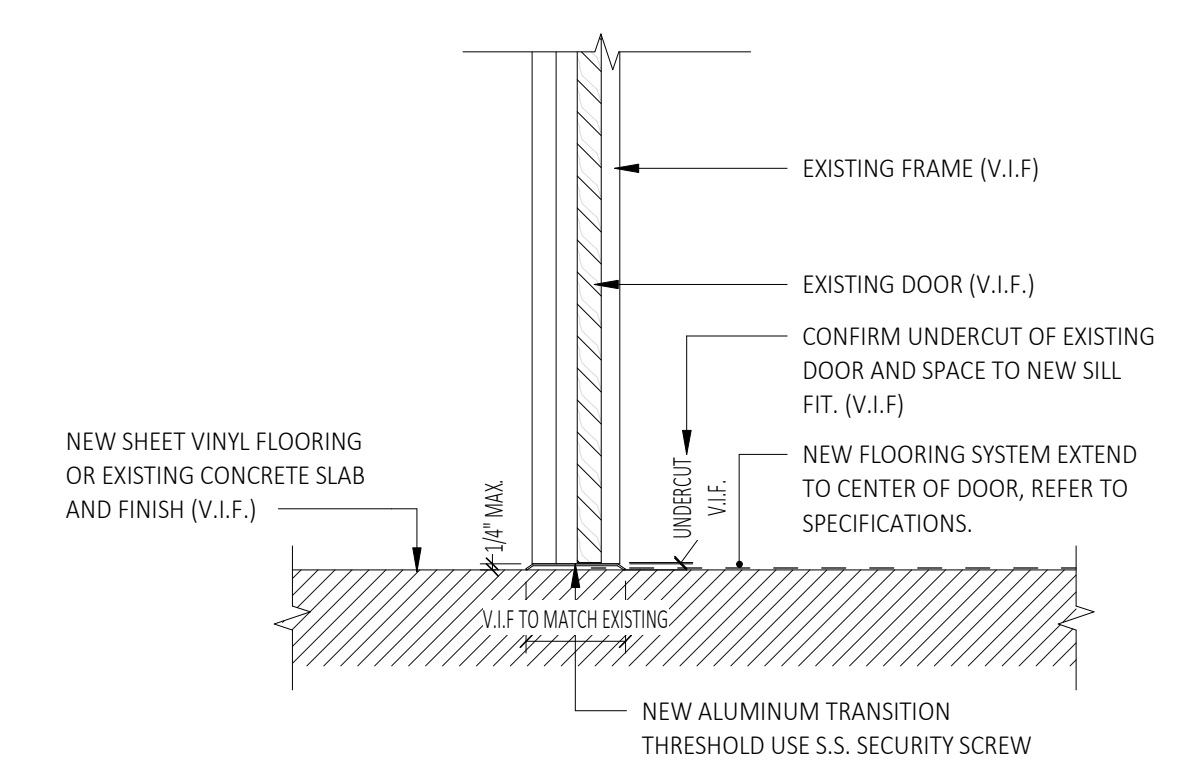
**9**  
**A600** Rubber Base and Sheet Vinyl Floor  
 SCALE: 1 1/2" = 1'-0"



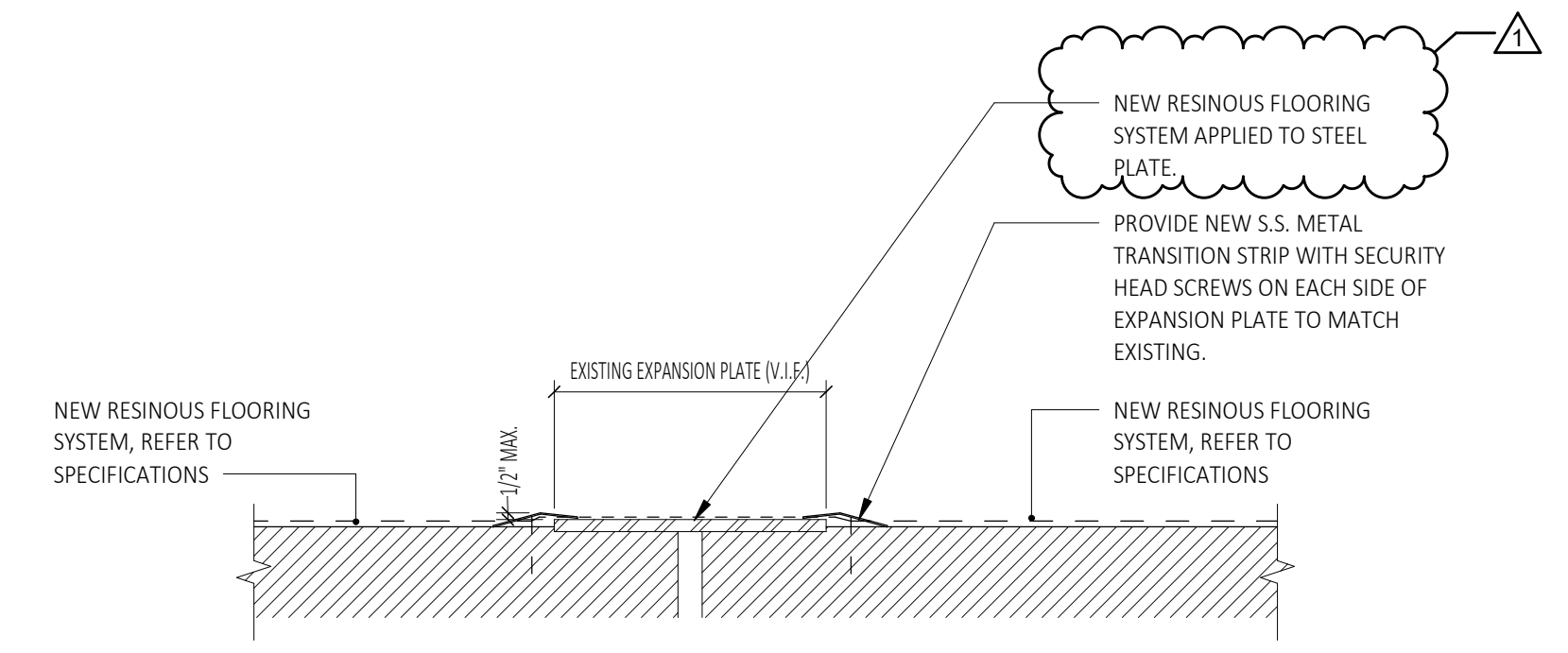
**8**  
**A600** Curb And Shower Floor Work Detail  
 SCALE: 1 1/2" = 1'-0"



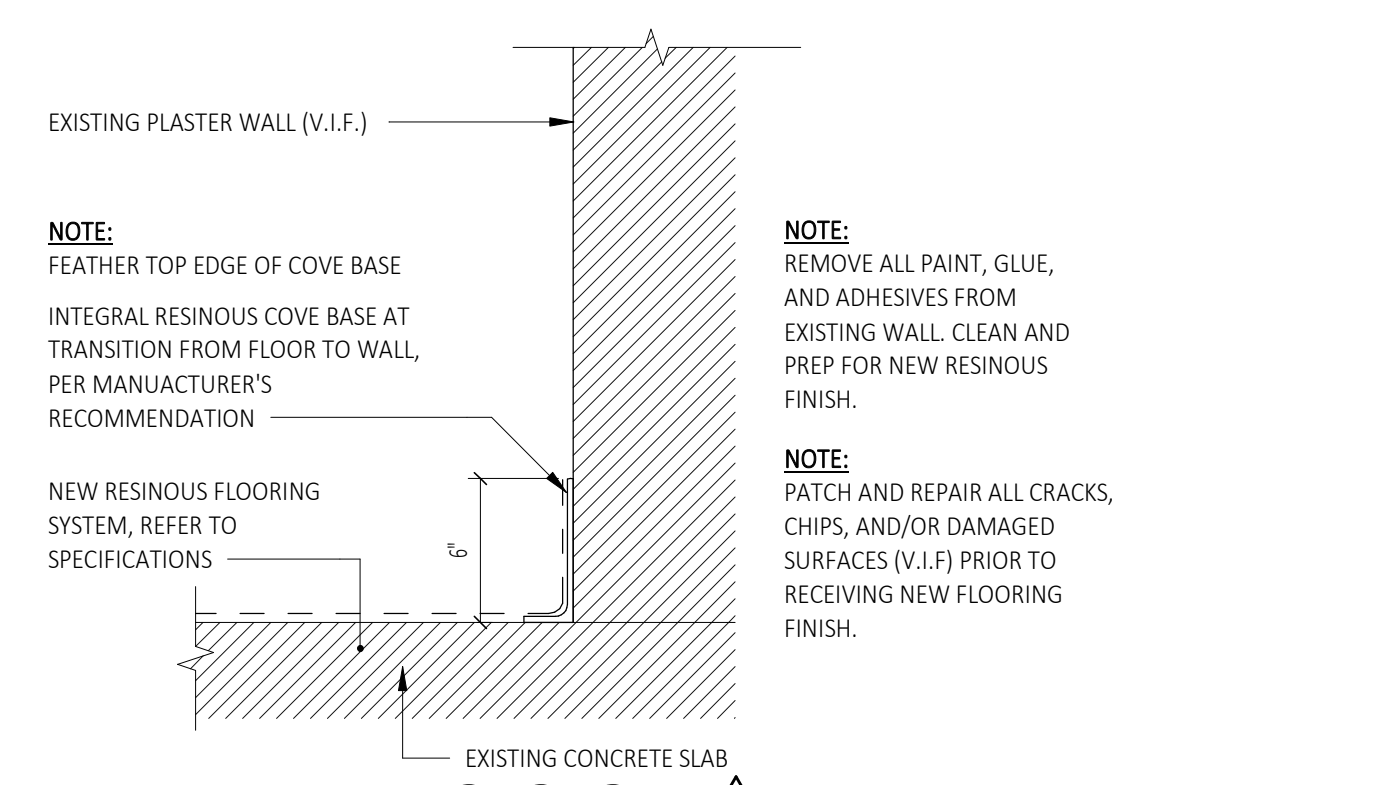
**7**  
**A600** Elevator Sill and Track  
 SCALE: 1 1/2" = 1'-0"



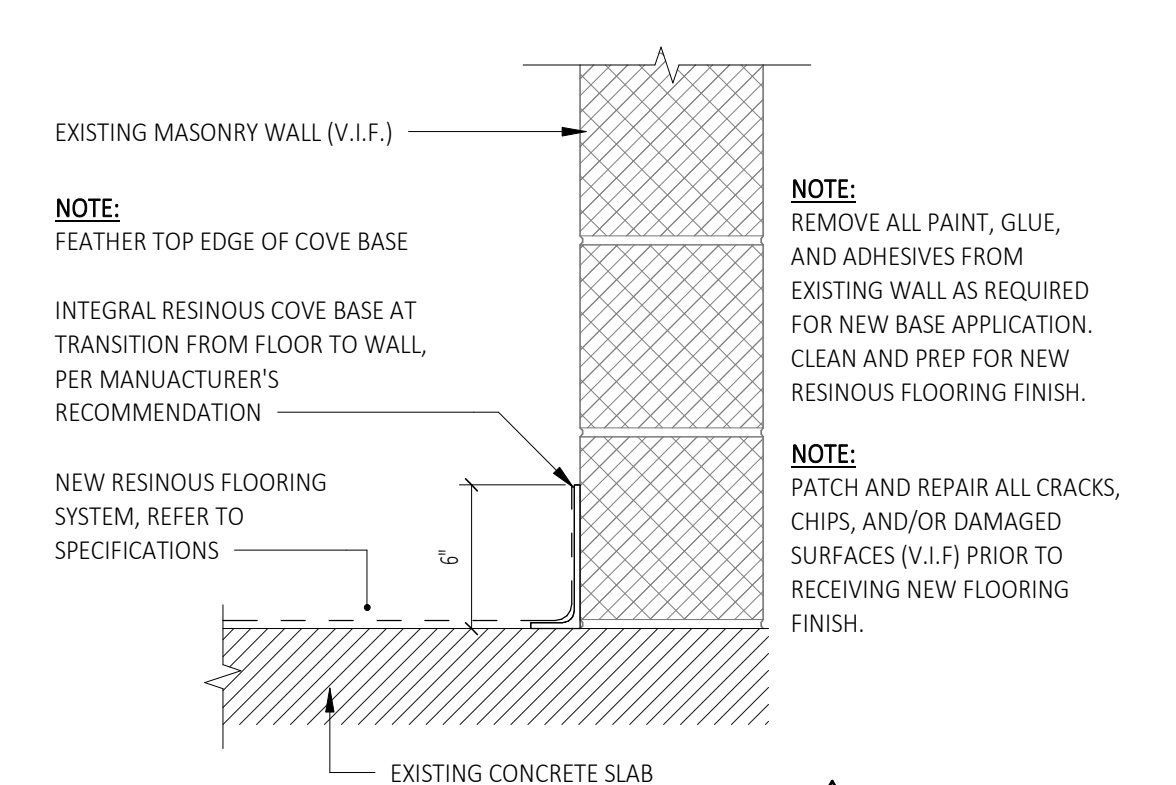
**6**  
**A600** New Transition Threshold  
 SCALE: 1 1/2" = 1'-0"



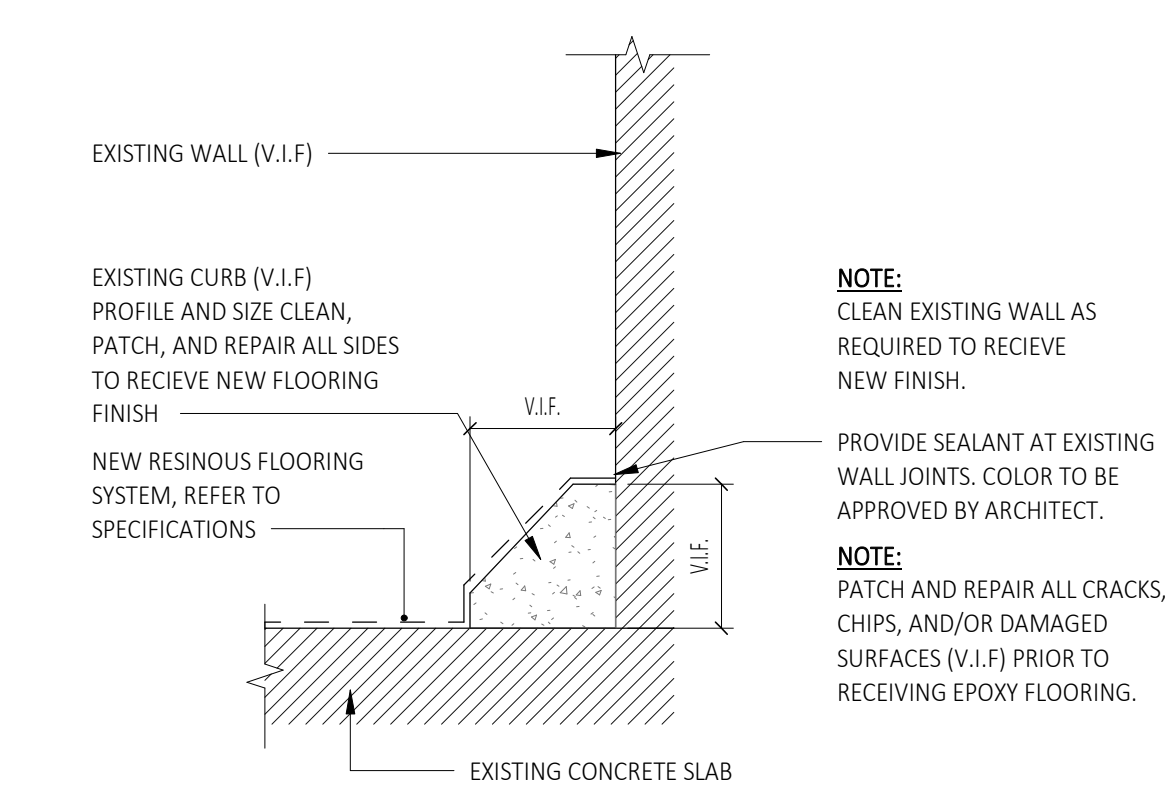
**5**  
**A600** New Metal Transition At Existing Floor Expansion Plate  
 SCALE: 1 1/2" = 1'-0"



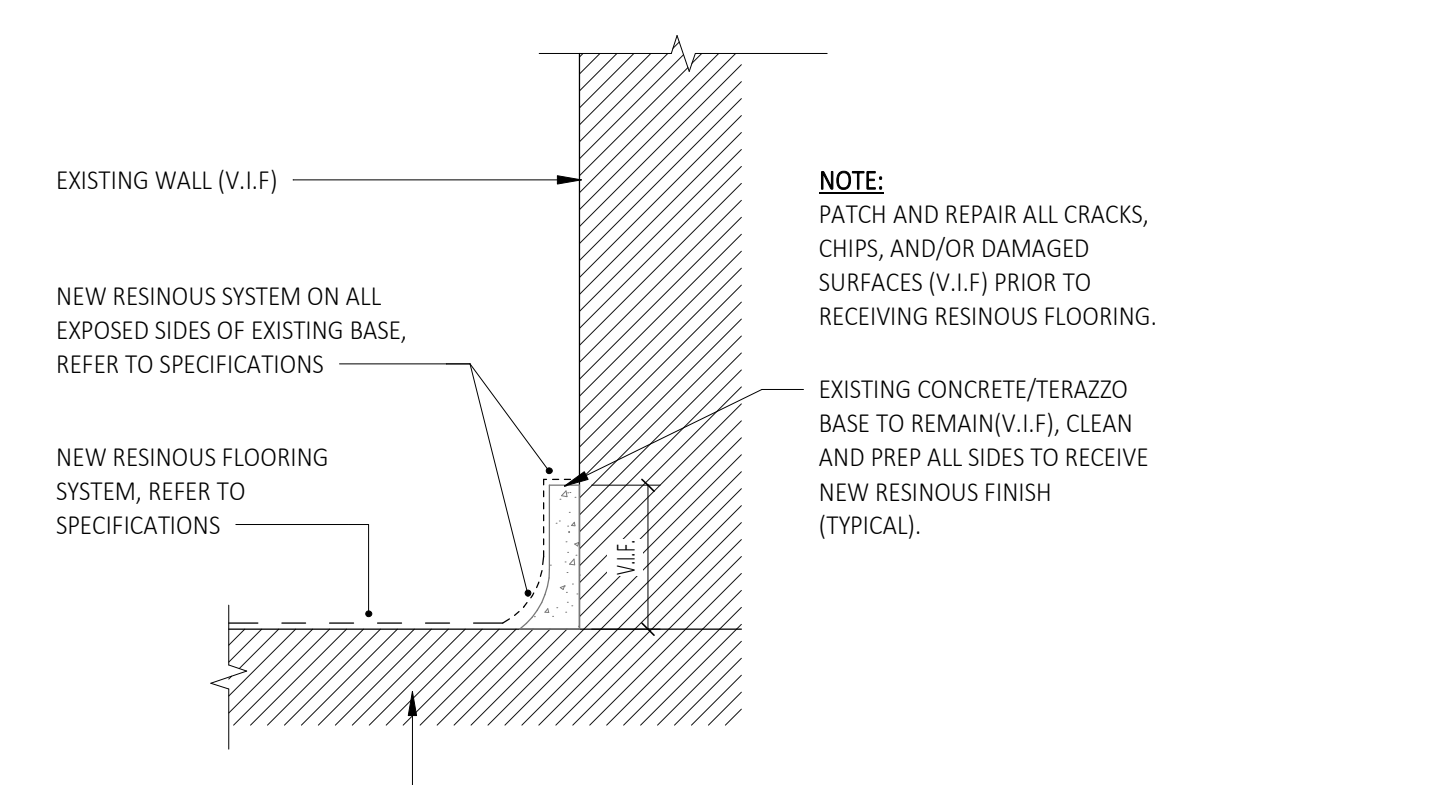
**4**  
**A600** New Epoxy Resin Base at Existing Wall  
 SCALE: 1 1/2" = 1'-0"



**3**  
**A600** New Epoxy Resin Base at Existing Masonry Wall  
 SCALE: 1 1/2" = 1'-0"



**2**  
**A600** Existing Curb with New Epoxy Resin Finish  
 SCALE: 1 1/2" = 1'-0"



**1**  
**A600** Existing Built-Out Base with New Epoxy Resin Finish  
 SCALE: 1 1/2" = 1'-0"

STAMP:

Bid Set: RFB-2023-23

DATE:	07/21/2023
SUBMITTAL / REVISION	
ADDENDUM #1	
No.	1

Details (General & Add Alt. 1, 3, 5, & 10)  
 Renovations To:  
 Schenectady County Jail Epoxy Flooring & Facilities Upgrades  
 Schenectady, NY 12305  
 320 Veeder Ave

DRAWN BY:	C2 Architecture
DATE:	06/13/2023
SCALE:	AS NOTED
JOB NO:	2286
SHEET:	<b>A600</b>